

MK-1 ShPS Mounting Kit

INSTRUCTION MANUAL

1 GENERAL

MK-1 ShPS Mounting Kit is designed to attach additional equipment to the doors of mount boxes ShPS-12, ShPS-12 rev.02, ShPS-12 rev.10, ShPS-12 rev.12, ShPS-24, ShPS-24 rev.02, ShPS-24 rev.10, and ShPS-24 rev.12.

The overall dimensions (in pack) are no more than 370 mm × 44 mm × 38 mm.

The weight is no more than 0.7 kg.

The content of precious materials: not subject to inventory accounting in case of storage, disposal and recycling (Clause 1.2 of Russian Standard GOST 2.608-78).

The content of non-ferrous metals: does not require accountability for retirement and further disposal.

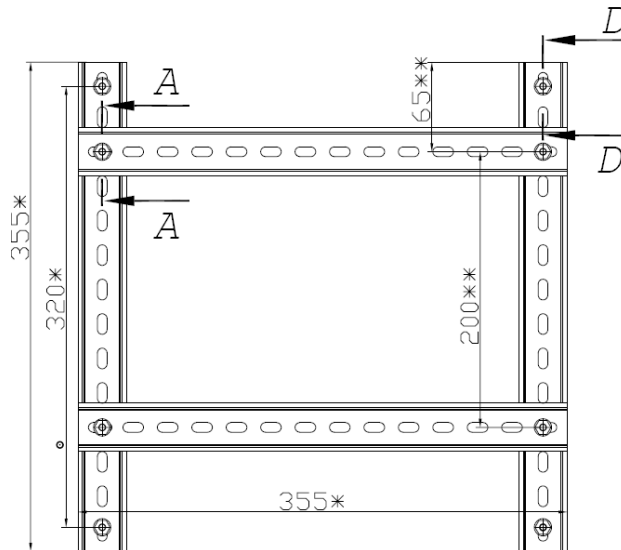
2 STANDARD DELIVERY

- | | |
|--|-----------|
| 1) Instruction Manual | - 1 copy |
| 2) Rail | - 4 pcs. |
| 3) Bolt M5×8 GOST 7805-70 | - 4 pcs. |
| 4) Hex Flange Nut M5 GOST R 50592-93 (DIN6923) Zinc Plated | - 8 pcs. |
| 5) Washer 5.01.08кп.016 GOST 6958-78 | - 12 pcs. |
| 6) ΦK102-01 (or similar) DIN Rail End Bracket | - 8 pcs. |

3 OPERATION INSTRUCTIONS

The figures below show how to assemble and install the rails.

3.1 Mount the rails at four points A-A using the bolts, nuts, and washers provided.



* reference dimensions

** the size is defined at the place of installation

Figure 1.

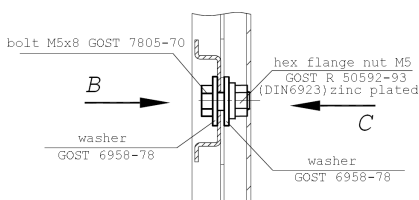
View B



View C



SECTION A-A



3.2 Attach the rails to the door at four places D-D.

SECTION D-D

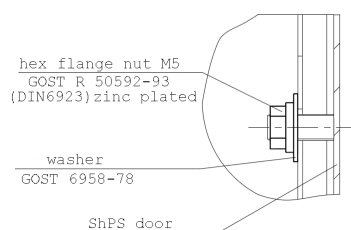


Figure 2.

3.3 An example of equipment arrangement on the door of a ShPS-12 or ShPS-24.

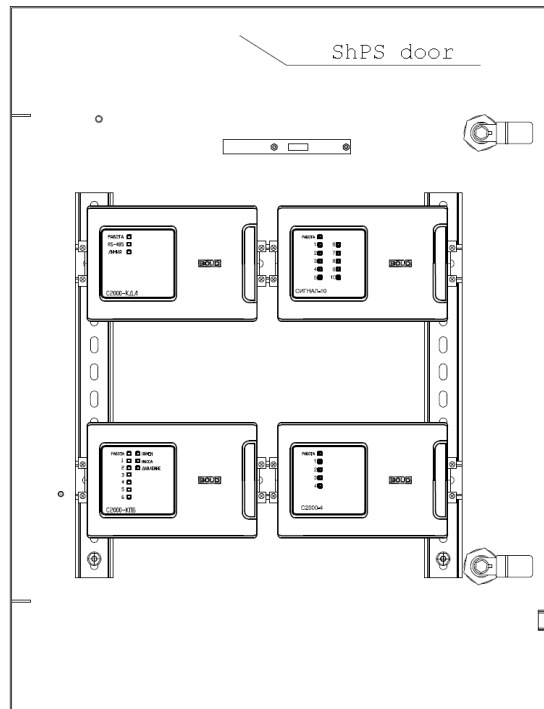


Figure 3.

4 MANUFACTURER WARRANTY

- 4.1 The manufacturer guarantees that the MK-1 ShPS Mounting Kit meets the requirements of technical documentation.
- 4.2 Warranty period is 18 months but no more than 24 months from the manufacturer's date of issue.
- 4.3 In case of any issue related to installing the product, please contact with the technical support: +7 (495) 775-71-55 or e-mail: support@bolid.ru.
- 4.4 When submitting the product for repair, it shall be with the pasted serial number label and accompanied with a description of possible fault.

Claims shall be submitted to the following address: NVP BOLID CJSC,
Pionerskaya #4, Korolyov city, Moscow region, Russia, 141070.

Phone/fax: +7 (495) 775-71-55 (multiline), +7 (495) 516-93-72.

E-mail: info@bolid.ru, <http://bolid.ru>. Technical Support: support@bolid.ru.

5 CERTIFICATES

- 5.1 The MK-1 ShPS production is certified according to GOST R ISO 9001. The conformity certificate can be found online at <http://bolid.ru> in the section [ABOUT COMPANY](#).

6 ACCEPTANCE AND PACKING CERTIFICATE

- 6.1 The MK-1 ShPS Mounting Kit with the serial number _____ is manufactured and accepted in line with actual technical documentation and is approved as proper for operation.

- 6.2 The MK-1 ShPS Mounting Kit is packed by CJSC NVP Bolid in accordance with the requirements of actual technical documentation.

Responsible for Acceptance and Packing

QCD _____
Name

Date, Month, Year

